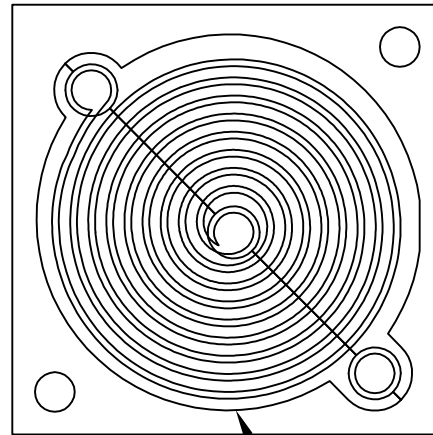


DWG. NO.

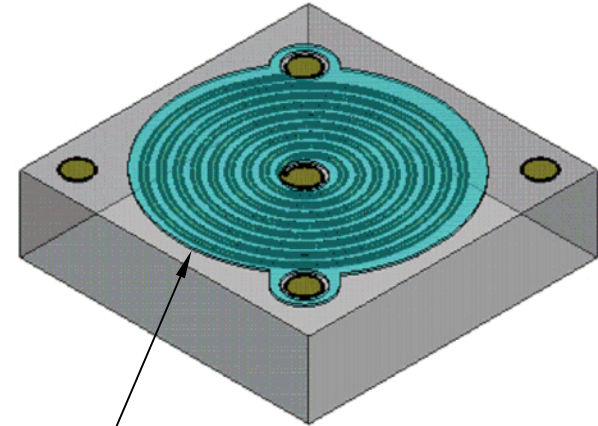
REVISIONS			
REV	DESCRIPTION	APPROVED	DATE

ATP-I-.010-Q-406 revA
8.25 TURNS

← .0380 →



↑ .0380 ↓



NOTES: (UNLESS OTHERWISE SPECIFIED)

1. MATERIAL: .010 THK QUARTZ/FUSED SILICA (SiO2)

2. METALIZATION A SIDE

TiW= 400-800 Å°

Au= 250 uin min.

NO METALIZATION ON B SIDE

3. CRITICAL DIMENSIONS:

LINE= .0006±.0001

GAP= .001±.0001

⚠ POLYIMIDE=3-6 MICRONS



ITEM	QTY	PART/MATERIAL - DESCRIPTION	MATL-DWG NO.	MATL-SPEC
PARTS LIST				
CAD GENERATED DRAWING DO NOT MANUALLY UPDATE				
APPROVALS		DATE		
DRAWN	BKL	01/10/13		
MFG	A.Mackey	02/07/13	TITLE	
QA	K.Netser	02/07/13	8.25 TURN 40.6nh SPIRAL INDUCTOR	
DOC CNTRL	C.Quesada	02/07/13	SIZE	CAGE CODE
			B	04ZMO
			DWG. NO.	ATP-I-010-Q-406
			SCALE	REV A
				SHEET 1 OF 1

